

TechForAg Modulare Parlor

Model: Dbl. 10 Original Germania ProTime I HerringBone - Remanufactured

Includes several Groups of *New!* Equipment

Key Features: Rapid Exit - Automatic Indexing - All Stainless

Proposal Prepared for: Web Site # 120-GPT-I (AF)



<i>Qty</i>	<i>Units</i>	<i>Description</i>			<i>Cost to End-user</i>
20	Stalls	Germania ProTime I Stalls - Remanufactured - All stainless RumpRails; 45" spacing - (2) Stainless Support posts per side - Rapid Exit Brisket Bar - stainless - Auto-Indexing (w/(4) 3" x 10" stainless Cylinders)			\$ 35,714

Modules to be 53" wide with 10" Indexing System to accommodate 1,800 lbs + Cows



All-stainless Germania Brisket Bars

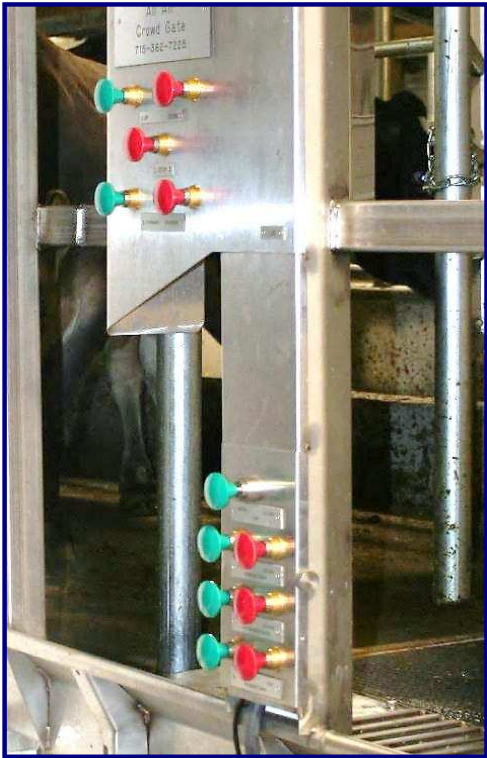
Self-supporting without any additional posts (no sequence gates either). Therefore, no posts for the cows to walk around and no posts for you to clean around.

If one of them goes down from milk fever you can easily get to her with the skid loader.

Left: Dbl. 12 Brisket Bar in indexed position.

Right: Brisket Bar in Rapid Exit position

<i>Qty</i>	<i>Units</i>	<i>Description</i>		<i>Cost to End-user</i>
1	Group	<p>Automated Cow Traffic Controls - Remanufactured</p> <ul style="list-style-type: none"> - (6) 3" x 10" stainless Cylinders for Indexing - (4) 3" x 10" stainless Cylinders for Entrance and Exit Gates - Main Control Panel with (6) Buttons each - Remote Control Panel in front to reduce walking 		<i>Included in Cost of Stalls</i>
<i>All-stainless TechForAg cylinders are easy to service. Just remove (4) bolts....</i>				



**Cow Traffic Controls at last stalls on either side of parlor. Plus (2) remote panels in front.
5-Button Crowd Gate controls on one side only. Stainless cylinders operate all Gates & Automatic Indexing**

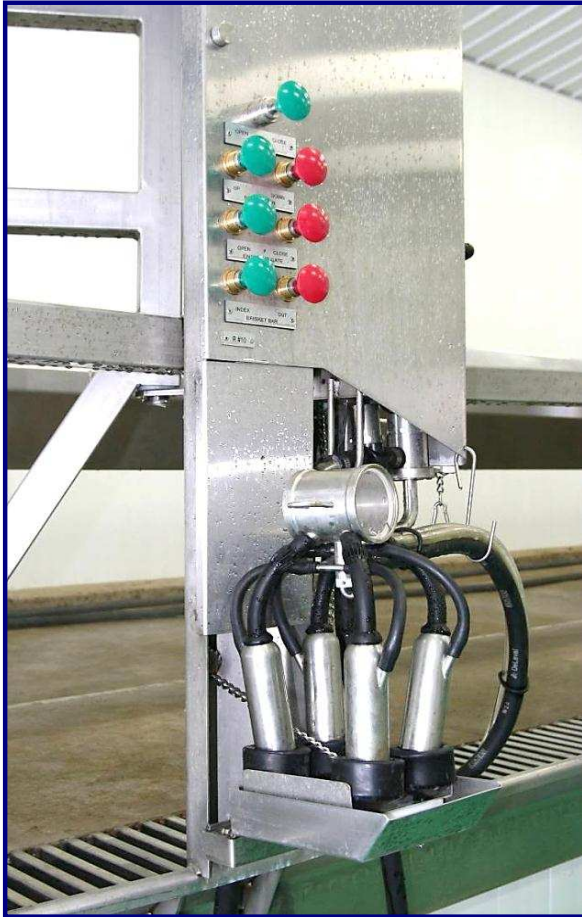
<i>Qty</i>	<i>Units</i>	<i>Description</i>			<i>Cost to End-user</i>
20	Stalls	Original Germania Galvanized Grates			\$ 1,429



20	Stalls	<i>Stainless</i> Curbing and <i>Stainless</i> Gutters - New!			\$ 8,036
----	--------	---	--	--	----------

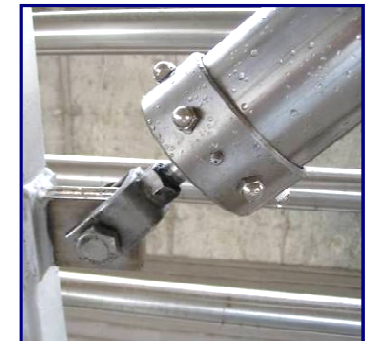
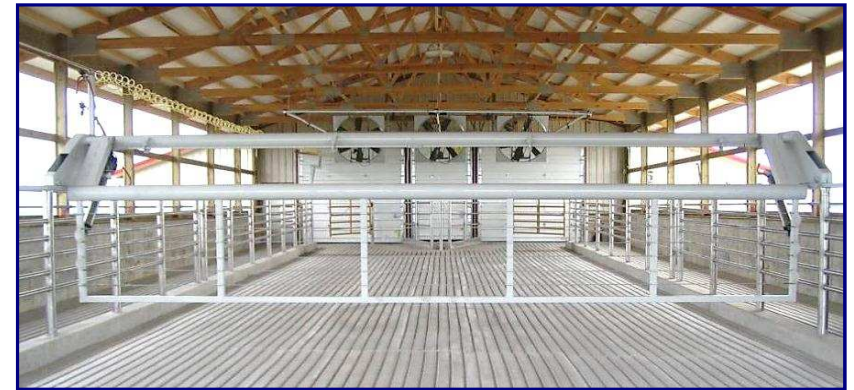
2	Units	15" x 10 ft Cross-Over Channels at Front and Rear of pit			\$ 5,357
---	-------	---	--	--	----------

Qty	Units	Description			Cost to End-user
20	Units	Air Powered CIP Cup Holders - Remanufactured Single push button operated - "Now you see them - then you don't" Match Jetter Cups to Inflation - <i>Brand & Model # _____</i>			<i>Included in Cost of Stalls</i>



0	Units	Fold-Up CIP Cup Holders (Similar to ProTime I, but manually operated)			\$ -
0	Units	Traditional CIP Cup Holders (Slide Rubber Cups into a stainless Rack)			\$ -

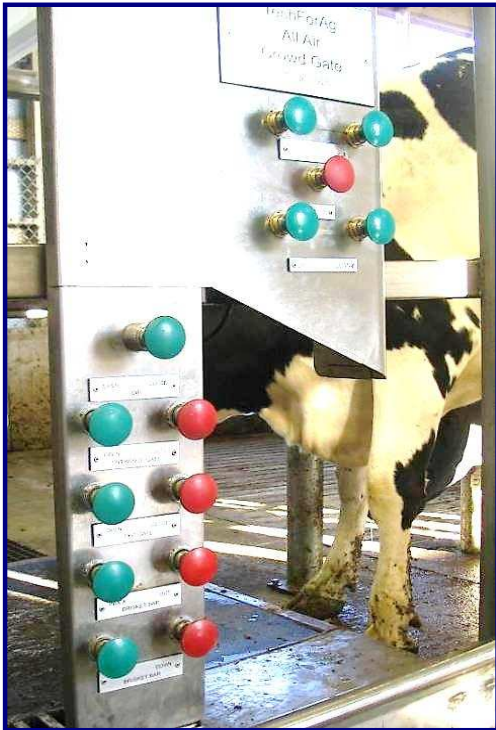
<i>Qty</i>	<i>Units</i>	<i>Description</i>			<i>Cost to End-user</i>
1	24 ft x 75 ft	<p align="center">HERITAGE</p> <p align="center">Heavy Duty Air Operated Crowd Gate - Remanufactured</p> <p align="center">(Various other gates are <i>Optionally Available</i> -</p> <p align="center">For more information go to</p> <p align="center">http://www.techforag.com/Crowd_Gate_Prices_9.pdf)</p>			\$ 10,714
160	ft	<p align="center">C-4 x 6.5 lbs Crowd Gate Channel - Remanufactured</p> <p align="center">(Cold galvanized)</p>			\$ 1,131



Heavy Duty, Germania-Style Crowd Gate; Air-Powered Gear Motor - no electric controls what-so-ever. Lifts anywhere in Holding Pen

For more information go to
www.techforag.com/WhyCrowdGates

<i>Qty</i>	<i>Units</i>	<i>Description</i>			<i>Cost to End-user</i>
0	ft	<p>Holding Pen Fence, galvanized</p> <p>with 3" verticals @ 5 ft on center per 20 ft section of fence; (4) 1 1/2" Pipe Horizontals @ 12" o/c</p> <p>Normally, your Contractor provides the Holding Pen Fences. We'll provide them if he doesn't want to or can't @ \$74/ft les</p>			\$ -
0	ft	<p>2 x 10 ft V-Lane Fences from H.P. into Parlor...</p> <p>@ \$74/ft less 15%</p>			\$ -
		<p>Three Crowd Gate Control Stations:</p>			Cost include with Crowd Gate



Left: Main Control station in back of parlor;

Center: Remote Controls in back of Holding Pen

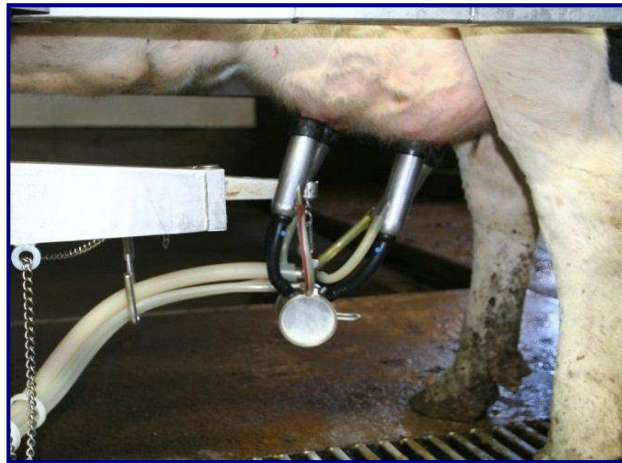
Right: Two extra buttons in front of parlor to reduce walking

<i>Qty</i>	<i>Units</i>	<i>Description</i>			<i>Cost to End-user</i>
20	Units	<p>Original Germania Model SB ArmTakeOffs - Remanufactured</p> <p>All-Air, All-stainless, with spring-loaded clutch for arm</p> <p>For more information on Arm TakeOffs go to http://www.techforag.com/AutomaticTakeOffsMain.html</p>			\$ 42,714



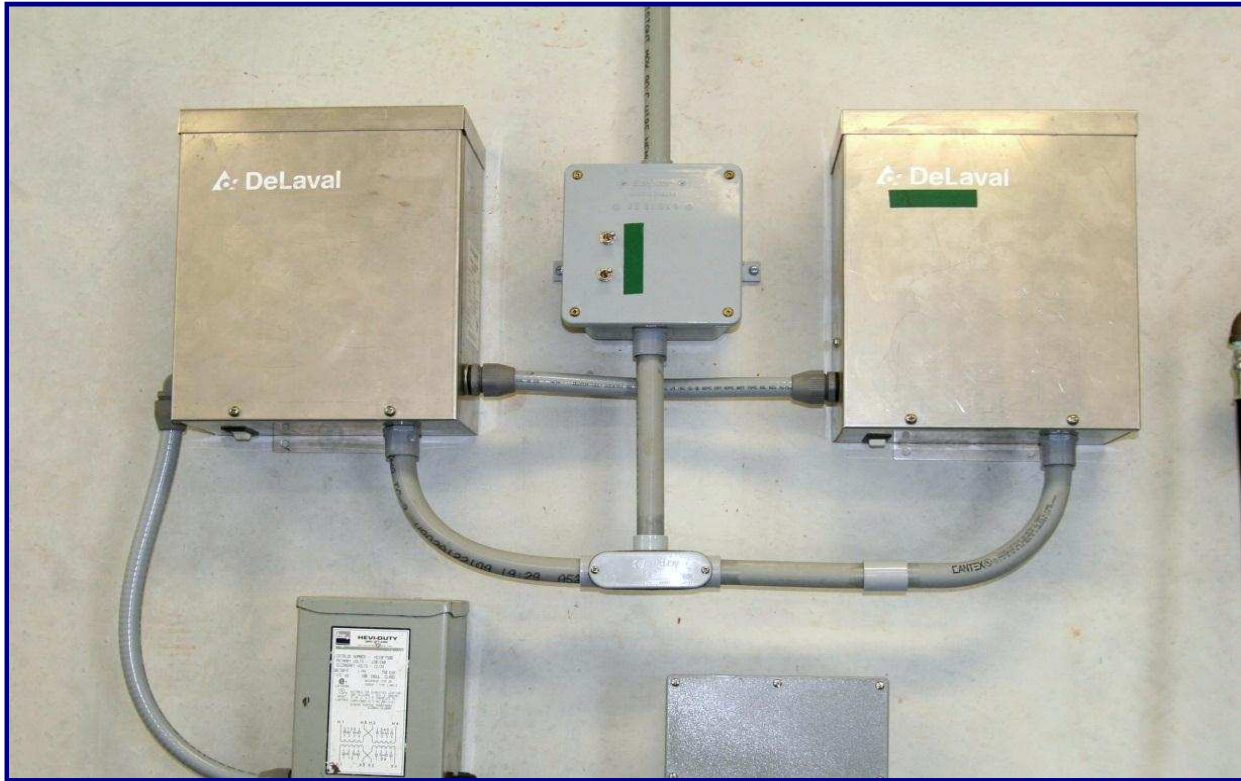
0	Units	Automatic Pulsation ShutOff - New!			\$ -
---	-------	---	--	--	------

<i>Qty</i>	<i>Units</i>	<i>Description</i>			<i>Cost to End-user</i>
20	Units	<p>Original Germania Top Outlet Claw-Clusters - Remanufactured - with:</p> <ul style="list-style-type: none"> - Air Forks - 06 Shells - Strangko Pulsators - All Silicone Rubber Goods - Inflations of your Choice; Model _____ 			\$ 8,408
		<i>All Rubber Goods are Silicone, except inflations</i>			



Germania's Top Outlet Claw hangs well balanced on the arm for milking and equally so in the rest position.

<i>Qty</i>	<i>Units</i>	<i>Description</i>		<i>Cost to End-user</i>
		Pulsation System - New!		
20	Stalls	<ul style="list-style-type: none"> - 3" PVC Pulsation line with hoses, fittings & wiring harness - 3" PVC FreshAir line with fittings & hoses - (6) FreshAir Filters - (2) 3" PVC Cross-Overs in front & back 		\$ 1,857
		(Pulsators included with Claw-Clusters)		
		24-Unit Strangko Pulsation Controller - Remanufactured		
2	Units	<i>Electrician provides 220 volt receptacle nearby - bid separately!</i>		\$ 2,143



<i>Qty</i>	<i>Units</i>	<i>Description</i>			<i>Cost to End-user</i>
HERITAGE CIP-Receiver Combination Group - New!					
0	Stall Equiv.	This group combines the traditional Receiver Group and the CIP System into a single pre-assembled aggregate - pre-plumbed, pre-wired and palletized			\$ -
		26" diam. x 30/40 Receiver - which is also the Wash Vat for the CIP Cycle			
		- AW-style Moisture Trap with 3" Vac inlet & 3" U-bend			
		'- (1) 4" x 33" Sock Milk Filters with 2" side outlet - (2) 2 hp Milk Pumps - (2) Variable Speed Controller for Milk Pumps, one for stand-by			
		- (2) LLC Probes for milk and water levels - 1" Input Group with hot and cold water valves + (3) chemical inputs			
		<i>Water supply lines to Omal valves should be at least 1" diameter. Otherwise takes too long to fill receiver</i>			
		- 1 1/2" Ball check valve with air blow-out for rest milk			
		'- HERITAGE C-Model 12.5 Pipe Line Washer with (3) peristaltic chemical pumps			
		<i>Electrician supplies:</i> - 220 Volt, _____single phase to this Group			
		<i>Plumber supplies:</i> - Hot & Cold water to the Input Group - Cold Water to the Plate Cooler			
		Includes Stand-by Milk Pump with pre-wired Twist-Lock Plugs			
		Also a Stand-by Variable Speed Controller, prewired as well			
0	Unit	4,500 lbs/hr Dual Pass Plate Cooler			\$ -
					Page 11 of 33

HERITAGE CIP-Receiver Combination Groups



Model 1500 installed at Steve Paul's new dairy Whitewater, WI. November 2009; Dbl. 10 ProTime-I - Expandable to dbl. 16

<i>Qty</i>	<i>Units</i>	<i>Description</i>			<i>Cost to End-user</i>
1	Group	Original DeLaval Receiver Group - Remanufactured, incl. 26" Receiver, 1 1/2hp Milk Pump, 4" x 33" Filter, Moisture Trap & U-Bend, Flapper Valve, LL Probes & Controller, Short Plug - Long Plug			\$ 5,357



1	Unit	1 1/2 hp LC-Thompson Milk Pump - Stand-By			\$ 1,984
---	------	--	--	--	----------

1	Group	Automatic CIP System: 120 gl Vertical Wash Sink, Water Level Sensor, Hot & Cold Water Valve, Heritage PipeLine Washer - New! (3) Peristaltic pumps for chemicals - New! (1) Air Injectors installed at Receiver - New! Automatic Drains			\$ 9,143
---	-------	---	--	--	----------

<i>Qty</i>	<i>Units</i>	<i>Description</i>			<i>Cost to End-user</i>
20	Stalls	<p align="center">3" Lo- Lines - Remanufactured</p> <p>Double slope, single loop, with nipples, fittings, all clamps, gaskets, brackets & 180 dgr U-Bend</p>			\$ 2,143



20	Stalls	<p align="center">2" CIP Line - Remanufactured</p> <p>- with nipples, fittings, all clamps, gaskets & brackets. - Both lines will be dead-ended at back of parlor</p>			\$ 1,429
----	--------	--	--	--	----------

80	ft	<p align="center">1 1/2" Discharge line - New!</p> <p>from CIP-Receiver Group to Milk Tank (Bottom Loading) and back to CIP Rec Group; incl. Safety Switch at Tank</p>			\$ 2,857
----	----	---	--	--	----------

<i>Qty</i>	<i>Units</i>	<i>Description</i>			<i>Cost to End-user</i>
0	Unit	Calf Milk Dispenser Collect warm milk at any time			\$ -



<i>Qty</i>	<i>Units</i>	<i>Description</i>			<i>Cost to End-user</i>
1	Group	<p align="center">Compressed Air System - Remanufactured</p> <ul style="list-style-type: none"> - (2) 7.5hp T-30 Ingersoll-Rand Compressors, one for StandBy - With Misc. Air Prep Components - New! - With New! TwinTower Drier, dries air to -10 dgr 			\$ 9,896
		<i>Electrician provides 220V to this group ___single or ___3 Phase?</i>			



(2) 7.5 hp Compressors

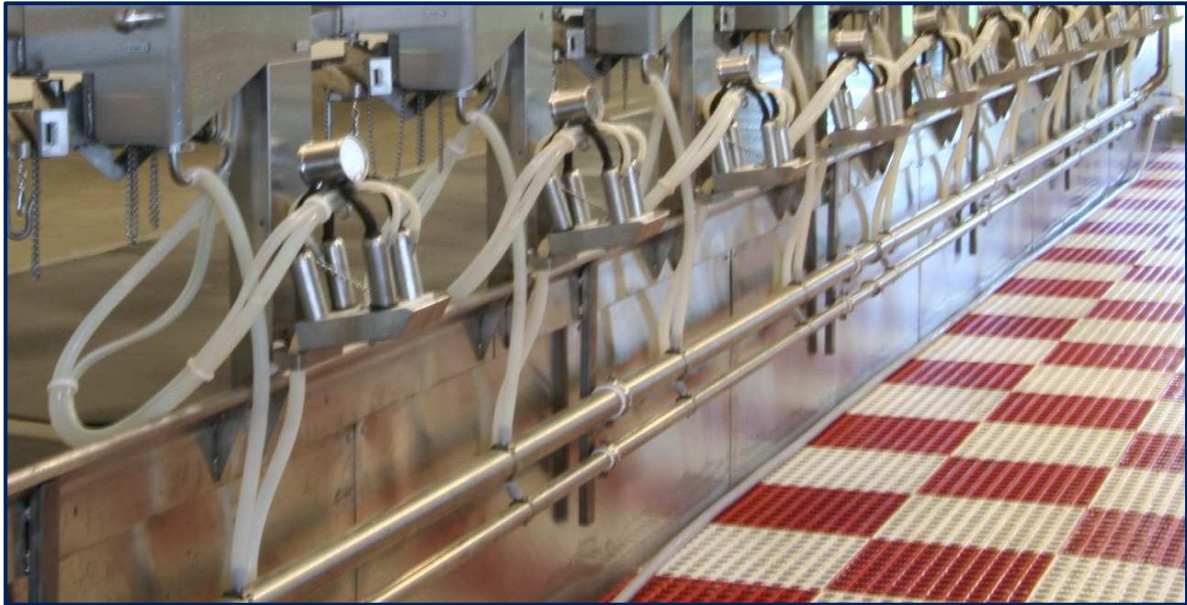


Twin Tower Drier dries air to minus 10 dgr

<i>Qty</i>	<i>Units</i>	<i>Description</i>		<i>Cost to End-user</i>
1	Unit	15 hp Vacuum Pump - Kaeser Remanufactured		\$ 3,333
1	Unit	15 hp RoKa Vacuum Pump Remanufactured		\$ 2,857
1	Unit	15 hp 3-phase Frequency Controller/Variable Speed Drive - New!		\$ 7,143
1	Group	<i>6" PVC Header Lines with 3" lines to Pulsation and Receiver Group; Also includes Pre-Filter, Check Valve, Test Port, Safety Valve, Slide Valve, Drains, etc.</i>		\$ 1,714
1	Unit	Sentinel Model 350 Vacuum Regulator - New!		\$ 765
		<i>Electrician provides 220 volt to this Group - Bid separately! ___single or ___3 phase?</i>		



<i>Qty</i>	<i>Units</i>	<i>Description</i>			<i>Cost to End-user</i>
0	sqft	Stainless Covering for Pit Wall and/or Parlor Walls 4 ft x 10 ft x 16 ga sheets, # 4 polish			\$ -



<i>Qty</i>	<i>Units</i>	<i>Description</i>			<i>Cost to End-user</i>
0	Units	<p align="center">4 ft x 4 ft stainless Divert Gate Built from 2 1/2 x 2 1/2 x 11 ga square tubing Divert exiting cows into a catch pen.</p>			\$ -
0	Group	<p align="center">Cylinders for the Divert Gates</p> <p>3" x 14" Stainless cylinders w/EV-125 Quick Exhaust Valves (4) Versa 'Open' & 'Close' Push Buttons</p>			\$ -



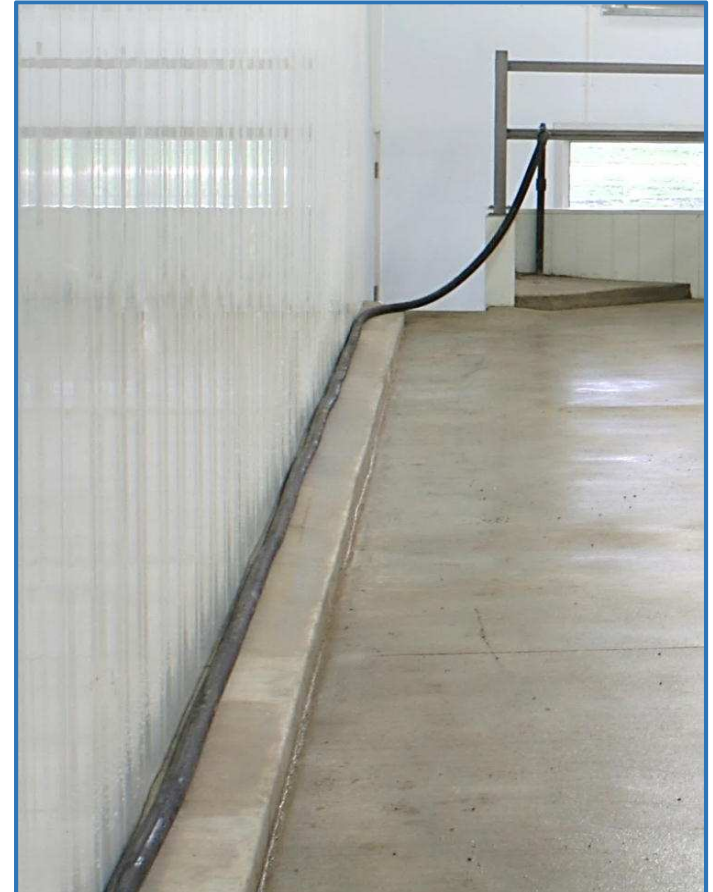
<i>Qty</i>	<i>Units</i>	<i>Description</i>			<i>Cost to End-user</i>
		On-Farm Spare Parts Kit (Contains only new parts)			
1	Group	Includes all essential parts for at least (1) year of operation (6) sensors, (2) retract cylinder, at least (4) of each air valves, an extra LLC, seal kits for the milk pump, (2) PC Boards for the Pipe Line Washer, several extra Pulsator, an extra Cluster Assy', etc.			\$ 6,071



<i>Qty</i>	<i>Units</i>	<i>Description</i>			<i>Cost to End-user</i>
1	Pcs	Double Compartment Sink - New!			\$ 643
1	Group	Accessories Group - New! Hand Wash Sink, Filter Sock Holder with (1) box of Filters, SST paper towel holder, SST soap dispenser, etc.			\$ 536



<i>Qty</i>	<i>Units</i>	<i>Description</i>			<i>Cost to End-user</i>
2	Group	(2) 70 ft long 1" Wash-Down Hose - New!			\$ 673
1	Group	(1) 25 ft long 1" Wash-Down Hose for the pit - New!			\$ 173
0	Units	<i>Optionally Available -</i> Air-Powered, all-stainless Hose Reel for the (3) Wash-Down Hoses			\$ -



Qty	Units	Description			Cost to End-user
0	sqft	Pit Mats for the Milkers - New!			\$ -



<i>Qty</i>	<i>Units</i>	<i>Description</i>			<i>Cost to End-user</i>
0	sqft	<p>Adjustable Pit Floor ...adjusts floor height by 8" up or down</p> <p><i>Floors raises and lowers by air pressure</i> <i>no motors, no switches</i> <i>Cost - about \$55/sqft</i></p>			\$ -



<i>Qty</i>	<i>Units</i>	<i>Description</i>			<i>Cost to End-user</i>
1	Unit	<p style="text-align: center;">Stainless Pit Steps - New! from parlor into Holding Pen; 4 steps, 30" wide, 8" riser with SST Handrail .</p>		\$	857



<i>Qty</i>	<i>Units</i>	<i>Description</i>		<i>Cost to End-user</i>
28	Sets	<p>Lights for the Milker Pit Basically a set of (2) stainless brackets to mount Fluorescent Light Fixtures</p>		\$ 1,920
		<i>48" Fluorescent Light Fixtures should be vapor tight and 100% corrosion resistant</i>		
		<p><i>We install the brackets on site;</i> <i>Electrician supplies and installs the fixtures</i></p>		
		<i>This parlor would need 56 ft of fixtures per side = 14 x 4ft</i>		



<i>Qty</i>	<i>Units</i>	<i>Description</i>			<i>Cost to End-user</i>
0	Units	<p align="center">AccuWeigh Milk Measuring System Remanufactured (Change Low-Line!)</p>			\$ -



		<p align="center">Germania Accuweigh 90 or 65</p> <ul style="list-style-type: none"> - Hold all of the milk for quick check before letting the cows go - Drain and re-vacuumize automatically when cows leave - Provide great vacuum reserve right next to the cow 			
0	Group	<p align="center">AW Control Boxes Turbo Controller, ____Extra VacShutOff Valves, etc.</p>			\$ Page 27 of 33 -
0	Units	<p align="center">Butter Fat Testers</p>			\$ -

<i>Qty</i>	<i>Units</i>	<i>Description</i>			<i>Cost to End-user</i>
2	Unit	Stainless Breezeway Fences with 3ft 'Side Wing'			\$ 2,694



0	ft	Stainless Cap for Breezeway Wall			\$ -
---	----	---	--	--	------



<i>Qty</i>	<i>Units</i>	<i>Description</i>			<i>Cost to End-user</i>
20	Stalls	1" Kraiburn Rubber Mats (Made in Germany) - New! For the Cow Platforms			\$ 3,778



<i>Qty</i>	<i>Units</i>	<i>Description</i>			<i>Cost to End-user</i>
2	Units	<p>(2) Modular Platforms for 10 stalls each <i>Stainless</i> The structural bases of the Modules; Height of your concrete cow platform should be 34" - if you are comfortable with a 38" working height - To be discussed!</p>			\$ 4,571



We build our parlor modules on platforms, a frame work made form 2" x 4" stainless tubing and usually 53" wide x 50 ft long for the typical dbl. 12. Normally, we slide the Modules into place on this steel frame work, pushed by a Skid Loader.

Summary Page

		Sub-Total Materials		\$ 188,043
		Pre-Assembly Labor & Material @14% to convert Parlor Materials into a Modular Parlor		\$ 26,326
		Cost of complete parlor before Discounts and Installation		\$ 214,368
		15% Dairy-Direct Discount		\$ (28,206)
		Cost of Parlor after Discounts		\$ 186,162
3	Units	Freight within the State of Wisconsin, (4) Trucks		\$ 2,400
		Cost of On-Site Installation (Applies only for State of Wisconsin; slightly higher charges elsewhere)		
		1. Time for (2) Parlor Specialists - (20) days @ 12 hrs @ \$55 hr		\$ 26,400
		2. Time value of (2) Parlor Specialists while travelling: (2) trips @ 10hrs @ \$35/hr		\$ -
		Travel Expenses: (3) Flight Ticket @ \$1,000; Rental Car 3 days; 3 Motel nights; Meals & Misc. 4 Days @ \$100		\$ -
		Grand Total - Cost of Parlor delivered and installed		\$ 214,962
		Per Stall		\$ 10,748
				Page 31 of 33

Terms - I

If production at TFA starts several months in the future

- 1) 15% down at signing of contract**
- 2) 25% on start of production**
- 3) 55% on delivery of parlor to the dairy**
- 4) 5% On start-up of milking**
- 5) \$1,000 Rebate for prompt payment**

Terms - II

If production at TFA starts more or less immediately

- 1) 35% at signing of contract, plus**
- 2) 60% on delivery of parlor to the dairy**
- 3) 5% on Start-up of Milking**
- 4) \$1,000 Rebate for prompt payment**

Please Note

We provide a rather unusual Warranty

**18 Months warranty on all materials. Does not apply to the Compressed Air Group and the Vacuum Group, for which we pass on the manufacturer's warranty
Warranty starts *after* parlor has been paid for in full**